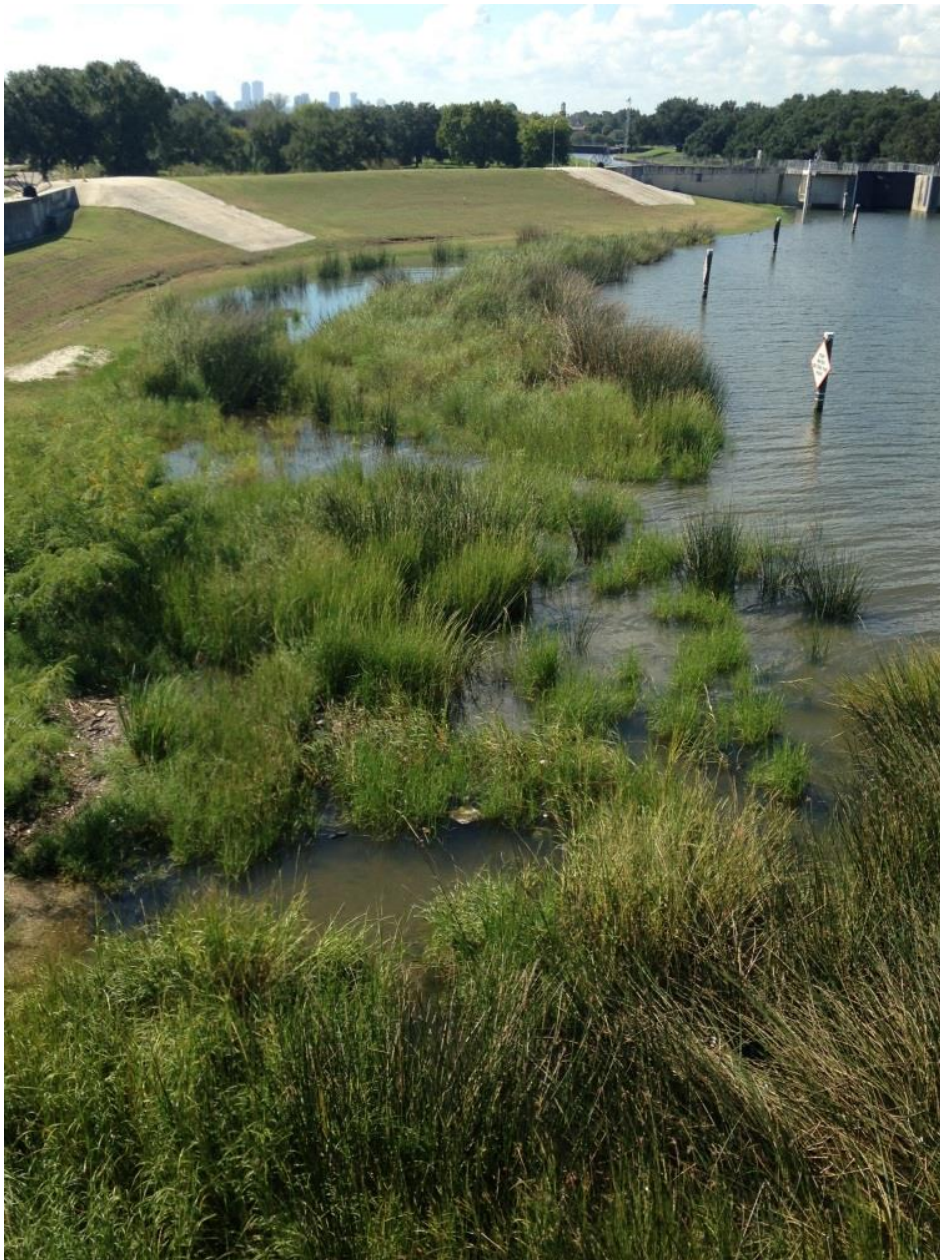




Education & Outreach Program

Service Learning Day at Bayou St. John

The Lake Pontchartrain Basin Foundation (LPBF) and Restore the Earth Foundation built a marsh at the mouth of Bayou St. John. This urban marsh is designed to improve water quality of the bayou and to be used as a teaching tool for citizens of the basin. Measuring a half-acre, this marsh is a way to quantify the amount of wetlands we lose every 30 minutes in coastal Louisiana.



Students are invited to participate in a service learning project by cleaning up litter at the urban marsh at the mouth of Bayou St. John, where the bayou meets Lake Pontchartrain.

Your students can meet at the New Canal Lighthouse to learn about the project, and then travel to the marsh about a mile away. There, students will be given data collection cards and trash bags to do a litter cleanup. They will also learn about the bayou and its importance to the city of New Orleans. Afterwards, students will travel back to the lighthouse to discuss and debrief. Data cards will be turned in, and that data will be shared with the New Orleans Sewerage & Water Board to be used as needed.



Timing is very flexible according to your needs. The following is a sample schedule:

9:00 a.m. – Arrive at LPBF’s New Canal Lighthouse

9:00-9:20 a.m. – Introduction to LPBF and its coastal restoration projects

9:20-9:30 a.m. – Depart for marsh site

9:30-9:45 a.m. – Arrive at site. Orientation and supply distribution

9:45-11:15 a.m. – Sweep of site

11:15-11:30 a.m. – Return to lighthouse

11:30 a.m.-12:30 p.m. – Bring a lunch and picnic at the lighthouse.

Divide into groups to do lighthouse tour
(\$5.00 group rate)

